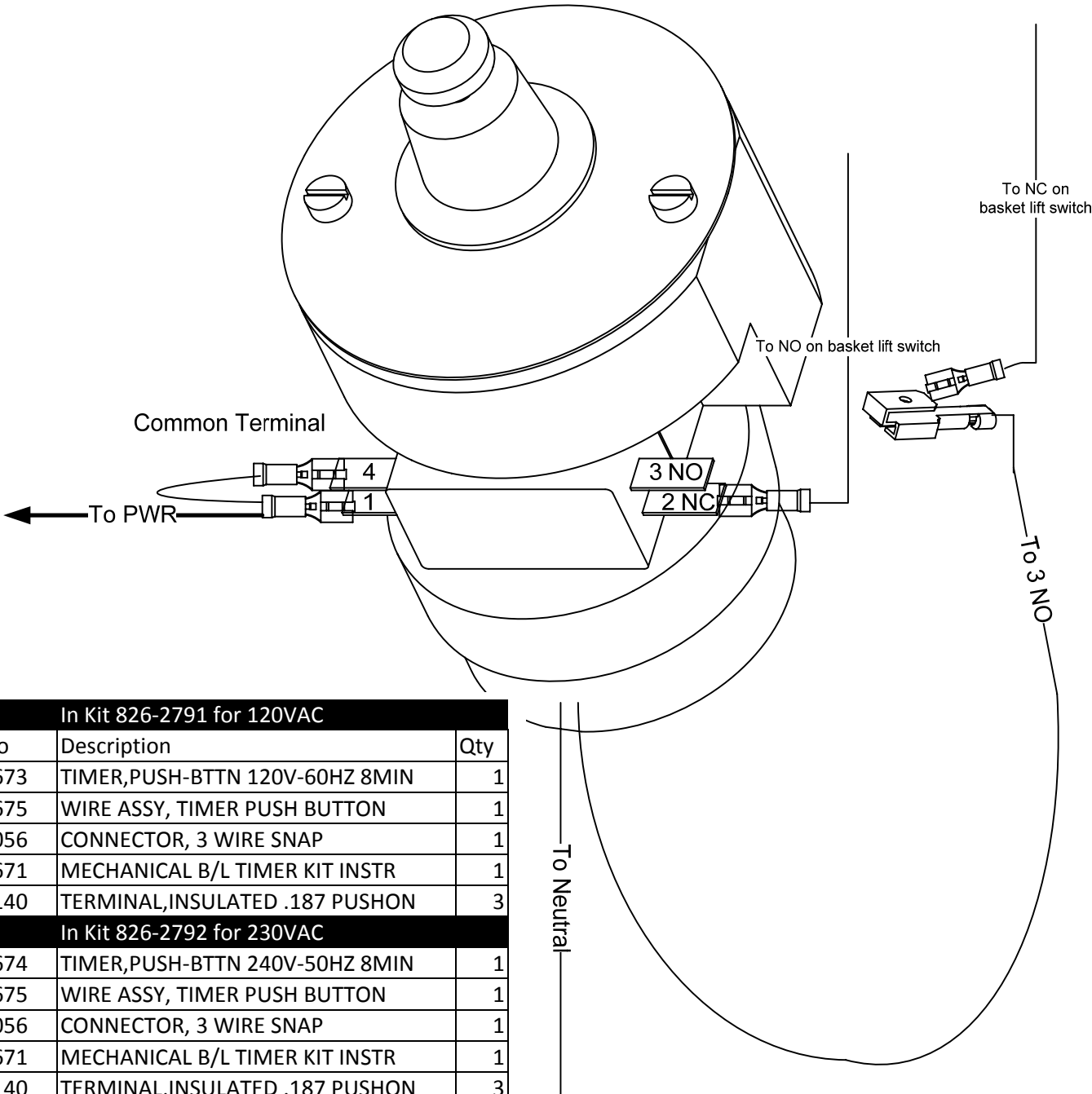
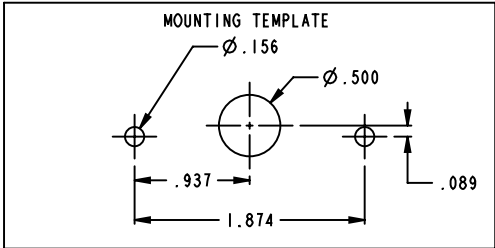


Basket Lift Kits

826-2791, 826-2792

Follow these instructions to replace a basket lift timer with the provided timer. Wiring for the new timer is provided below. The hole sizes to fit the new timer are provided in the drawing top right.



In Kit 826-2791 for 120VAC		
Part No	Description	Qty
108-2673	TIMER,PUSH-BTTN 120V-60HZ 8MIN	1
108-2675	WIRE ASSY, TIMER PUSH BUTTON	1
807-4056	CONNECTOR, 3 WIRE SNAP	1
819-6671	MECHANICAL B/L TIMER KIT INSTR	1
807-3140	TERMINAL,INSULATED .187 PUSHON	3
In Kit 826-2792 for 230VAC		
108-2674	TIMER,PUSH-BTTN 240V-50HZ 8MIN	1
108-2675	WIRE ASSY, TIMER PUSH BUTTON	1
807-4056	CONNECTOR, 3 WIRE SNAP	1
819-6671	MECHANICAL B/L TIMER KIT INSTR	1
807-3140	TERMINAL,INSULATED .187 PUSHON	3